

TOPES

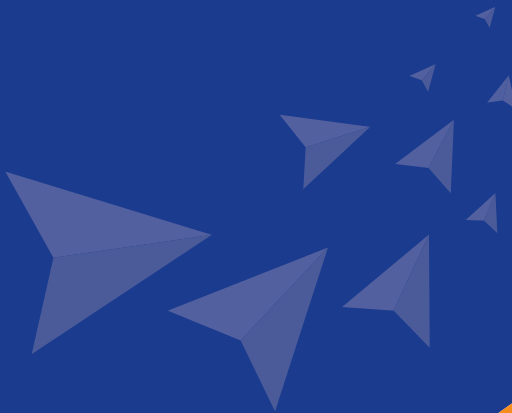
Keep the Smile





Since 1984

"Keep the Smile - TOPES"





TOPES Corporate Identity



TOPES Brand Identity

TOPCAM
IMAGEPRO
TOPES

- **Vehicle Enforcement System** _____
Speed Enforcement System / Red Light Enforcement System /
Point to Point Speed Enforcement System / Illegal Parking Enforcement System
- **Traffic information system** _____
Automatic Vehicle Identification System / Vehicle Detection System /
CCTV for Traffic Monitoring System
- **Security System** _____
Crime Prevention & Prevalence System / Roadway Surveillance System /
Intelligent CCTV System for Safety Improvement in the Protection Area
- **Image Contents** _____
Image Server / Music Server / I-TV(Industrial Television)
- **CCTV Accessory** _____
CCTV Accessory
- **LED Light System** _____
Security Lighting
- **S/W** _____
SI S/W Development

Business Area

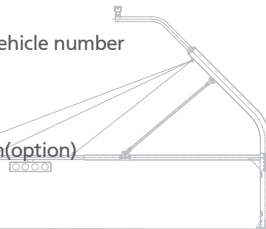
Speed Enforcement System

TOPCAM 2000

The TOPCAM 2000 scans for and detects speed violations using cameras and detection sensors (loop, laser and radar). They are installed on various types of roads and collect information such as license plate numbers, time and speed to transmit to a control center. When they detect a violation of the speed limit, information about the violating vehicle is automatically transmitted to a regional center and the central control center, thus enabling the responsible authority to issue a ticket for speeding.

Main Feature

- Sensor : Loop, Laser, Radar
- Identification method: auto identification of vehicle number
- Identification number: Over 90%
- Measurement speed: 10km/h ~ 250km/h
- Detection lane : 1 lane (Up to 4 lanes)
- License plate lookup and ticket printing system(option)



Vehicle detection

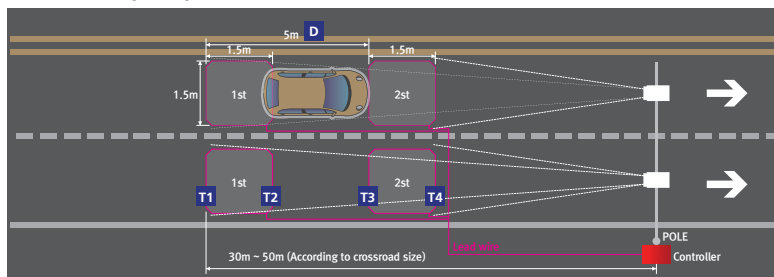


ANPR



Center

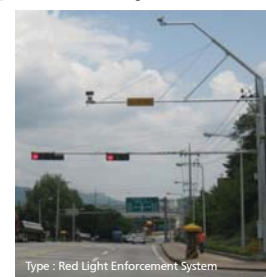
Enforcement principle



$$V(\text{km/h}) = \frac{1}{2} \times (D/(T2-T1)) + (D/(T4-T3)) \times 3600/1000$$

- V : Drive speed(km/h)
- D : Loop distance (5M)
- T1 : 1st loop entry time(Sec)
- T2 : 1st loop exit time(Sec)
- T3 : 2st loop entry time(Sec)
- T4 : 2st loop exit time(Sec)

Pole & Gantry



Type : Red Light Enforcement System



Type : Speed Enforcement System

- Material : Galvanized steel pipe
- ARM : 5M~12M
- POLE : 8M(for speed enforcement)
- 12M(for red/light enforcement)



Type : Point to Point Speed Enforcement System

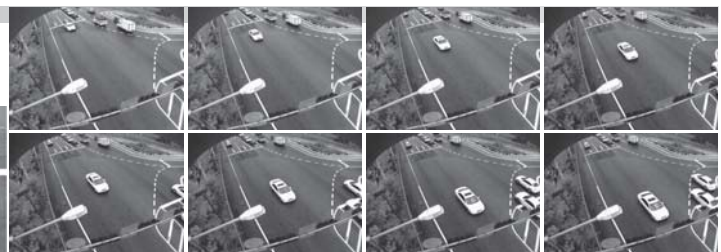
Red/Light Enforcement System

TOPCAM 2001

The TOPCAM 2001 scans for and detects speeding and traffic light violations using cameras and detection sensors (loop, laser and radar). They are installed on various types of roads and collect information such as license plate numbers, time, speed and traffic light violation to transmit to a control center. When they detect speeding and/or a traffic light violation, information about the violating vehicle is automatically transmitted to a regional center and a central control center, thus enabling the responsible authority to issue a ticket for the violation.

Main Features

- Sensor : Loop, Laser, Radar
- Identification method : auto identification of vehicle number, tracking of violating vehicle by image processing
- Identification number: Over 90%
- Measurement speed : 10km/h ~ 250km/h
- Detection lane : 1 lane (Up to 4 lanes)
- License plate lookup and ticket printing system(option)



Images from the tracking camera : Violation evidence

Red/light Enforcement by signal state



Red light

- Speed violation
- Red-light violation(Left-turn vehicle)
- Red-light violation(Stop violation)



Green light

- Speed violation
- Red-light violation(Left-turn vehicle)



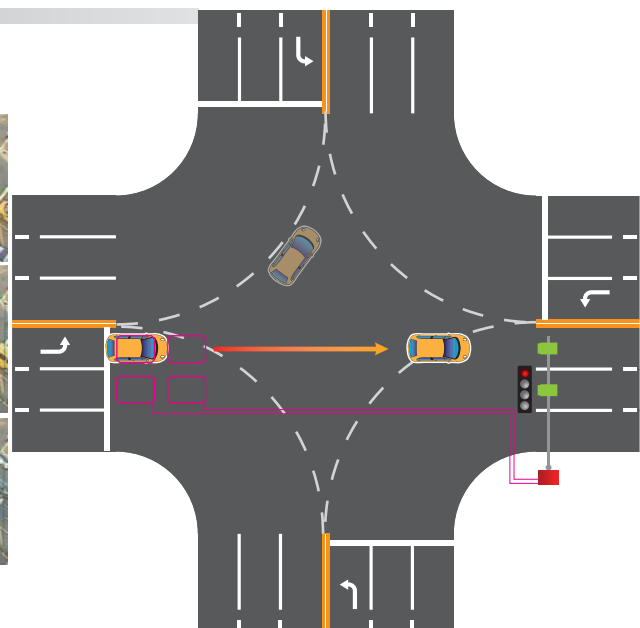
left turn

- Speed violation
- Red-light violation(Stop violation)



Multi lane Red/Light violation S/W

Tracking Video



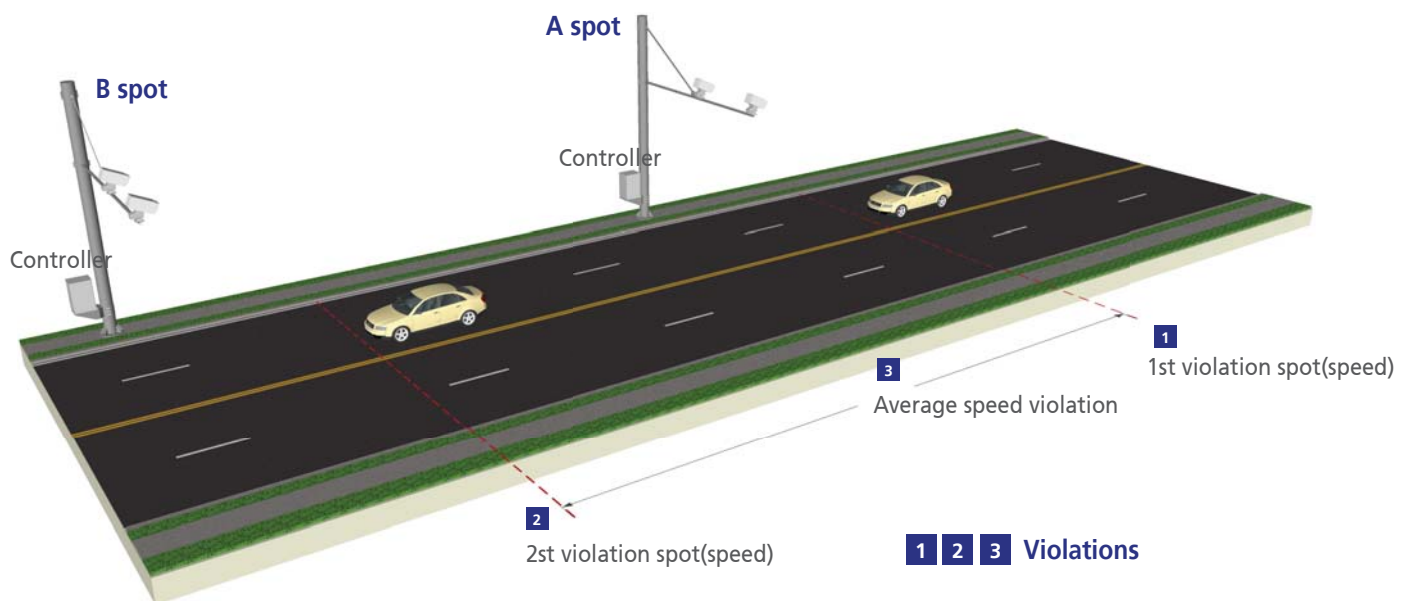
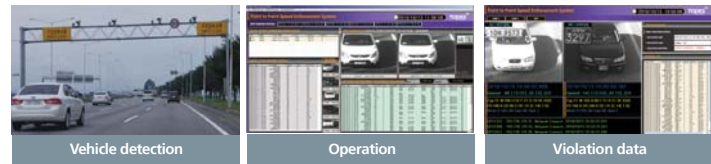
Point to Point Speed Enforcement System (Average Speed Enforcement system)

TOPCAM 2002

The TOPCAM 2002 scans average speed of vehicles to detect speed violations using cameras and detection sensors. (Loop, Laser and Radar) They are installed at the start and the end of a section of a road and transmit vehicle information such as license plate numbers, time and speed to a control center. When they detect a violation of speed (or the average speed of the section), information about the violating vehicle is automatically transmitted to a regional center and the central control center, thus enabling responsible authority to issue a ticket for the violation.

Main Feature

- Sensor : Loop, Laser, Radar
- Error rate of measurement speed : Less than ±5%
- Identification method : auto identification of vehicle number
- Accuracy of Time Server : ±100ms/day
- Identification rate: Over 90%
- Measurement speed : 10km/h ~ 250 km/h
- License plate number lookup and ticket printing system(option)



$$\frac{\text{Distance between A spot and B spot section}}{\text{B spot time - A spot time}} = \text{Section average speed}$$

Illegal Parking Enforcement System

TOPCAM 3000 (HD Type)

TOPCAM 3001 (Analog Camera Type)

The TOPCAM 3000/3001 scan for vehicles in a designated area using cameras. They are installed in areas where parking or stopping is prohibited, and when they detect a violation, information about the violating vehicle, such as the license plate number and duration of parking/stopping, is transmitted to a control center.

Main Feature

Automatic enforcement

- Video detection
- ANPR
- Track and zoom-in/-out of identification area

Manual transmission

- Monitor prohibited section and track location of violating vehicle at the center
- Auto focus and capture of Zoom, Pan/Tilt at manual area designation
- Manual control by operator
- Alarm for the vehicle under control or violating

Center operation

- Control and monitor multiple areas with diverse screen splits
- Send auto voice announcement and text message



- Auto control according to schedule
- View the vehicle information, levy penalty and issue notice

TOPES

Keep the Smile

Traffic Information System

Automatic Vehicle Identification System(Image detection)

The IMAGEPRO 8000 recognize vehicles using high-definition images. They are installed on various types of roads and collect vehicle information such as license plate numbers, time, and road speed to transmit to a control center.

IMAGEPRO 8000

Main Feature

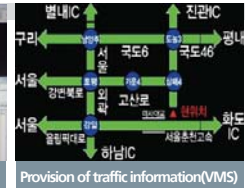
- Sensor : Image(Video) detection
- ANPR(Automatic Number Plate Recognition)
- Identification rate: Over 95%
- Measurement speed: 10km/h ~ 250km/h
- Information : Traffic volumes, Speed, Real-time video(option)
- Light : IR Light Panel(LED)
- Detection lane : 2 lane(one camera), Max 4 lane(one controller)



Vehicle detection



ANPR



Provision of traffic information(VMS)

Automatic Vehicle Identification System(Sensor detection)

The IMAGEPRO 6100 recognize vehicles using cameras and detection sensors (loop, laser and radar). They are installed on various types of roads and collect vehicle information such as license plate numbers, time and road speed to transmit to a control center.

IMAGEPRO 6100

Main Features

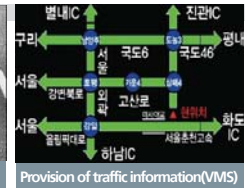
- Sensor : Loop, Laser, Radar
- ANPR(Automatic Number Plate Recognition)
- Identification rate: Over 95%
- Measurement speed: 10km/h ~ 250km/h
- Information : Traffic volumes, Speed, Occupation rate, Vehicle length, Accidents, Real-time video(option)
- Light : IR Light Panel(LED)
- Detection lane : 1 lane(one camera), Max 4 lane(one controller)



Vehicle detection



ANPR



Provision of traffic information(VMS)

Vehicle Detection System

IMAGEPRO 1000

The IMAGEPRO 1000 recognize vehicles using image-processing technology. They are installed on various types of roads and gather vehicle information such as traffic volume, vehicle length, occupancy time, and road speed to transmit to a control center. This raw data is used for understanding road traffic information.

Main Features

- Sensor : Image(Video) detection
- Traffic information : Traffic volumes, Speed, Occupation rate, Vehicle length, Accidents, Real-time video(option)
- Accuracy of average speed: Over 97%
- Accuracy of average traffic volume: Over 97%
- Transfer of status information by RTU
- Detection lane : 4 lane Per Camera, Max 8 Lane(1 Area)



Vehicle detection



Traffic information processing



Provision of traffic information(VMS)

CCTV for Traffic Monitoring System

The IMAGEPRO 4000 are for traffic control and allow monitoring of traffic conditions and emergencies using high-definition images.

IMAGEPRO 4000

Main Feature

- Transmission : H.264
- Resolution : NTSC Analog, Digital HD, Full HD
- Function : Environmental monitoring, ID on the specific direction, Route information, Control of Pan Tilt, Lens Control



CCTV



TIC(Traffic Information Center)-Main



TIC(Traffic Information Center)-Sub



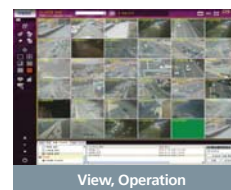
Crime Prevention & Prevalence System

IMAGEPRO 5000

The IMAGEPRO 5000 detect and track the movement of objects (persons, things or vehicles) using cameras installed pointing to different directions. They are installed on various roads for crime prevention and transmit information they gather by automatic target tracking, moving-object detection, and recording videos.

Main Feature

- Application : School zone, Life security, Enviromental crime(Fly tipping, Etc)
- Detection : Automatic image tracking
- Resolution : HD, Full HD, SD, D1
- Information : Vehicle's identification number, Image and video, Face recognition
- Option : Warning announcement, Two-way communications, Information for VMS



Roadway Surveillance System

IMAGEPRO 6000

The IMAGEPRO 6000 scan vehicles using cameras and detection sensors (loop, laser and radar). They are installed on various types of roads and scan passing vehicles for information such as license plate numbers, drivers and loaded goods to transmit to a control center.

Main Feature

- Sensor : Video, Loop, Laser, Radar
- Information : ANPR, Driver, Cargo on board
- Detection lane : Max 4 lane(one controller)
- Light : IR Light Panel(LED)
- Recognition rate : 90% and above
- Detection speed : 10km/h~250km/h



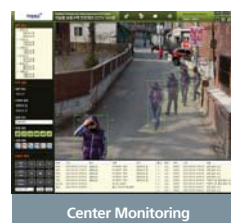
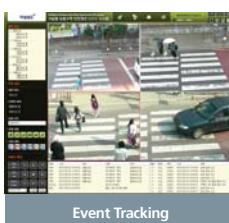
Intelligent CCTV System for Safety Improvement in the Protection Area

IMAGEPRO 7000

The IMAGEPRO 7000 scan, track, and analyze crosswalks, accident blackspots, and low security areas and their surroundings using cameras. The information collected is provided to pedestrians for their safety, and any accident detected is immediately reported to relevant organizations to protect people's lives and property.

Main Feature

- Detection : Video detection pedestrian, traffic light, vehicles
- Information : Safety and warning announcement at the crosswalk
- Image : HD, Full HD, image in D1 class
- Application : Crosswalk in the school zone or accident black spot



I-TV Solution I - Industrial Television

Begun in 1984 as a company specializing in industrial I-TV systems, TOPES successfully localized the production of I-TV systems that had previously all been imported. Since then, TOPES has supplied monitoring cameras for production lines at steel manufacturers and logistics centers at heavy industry and surveillance systems for container cranes at port facilities, thus making major contributions to industrial safety as well as factory automation.



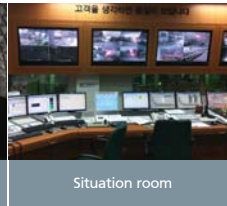
Singapore C.C

Gwangyang Iron Co.,
production process

Combined Heat & Power equipment



Raw material equipment



Situation room



Monitoring

Video and Music Server

The train broadcasting system consists of a video server, music server, and power supply and provides all passengers on Korean Train Express with various types of audio programs including music in MP3 as well as video contents such as news, sports, weather, advertisements and regional local information through LCD monitors and wireless earphones. In addition, the system provides vivid broadcasting to passengers in real time by receiving the latest audio and video from content providers through wired/wireless networks.

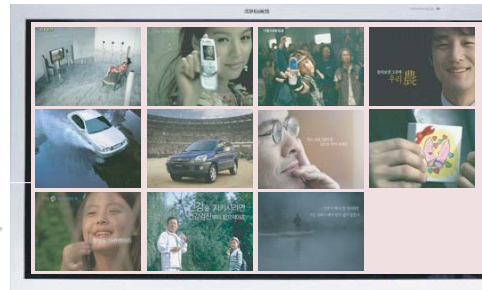


Image Server



Music Server



Power source equipment

Closed-Circuit Television Accessory

CCTV Controller

Transmission equipment that removes the noise occurred during transmission of camera image to the coaxial cable. Consists of 1 channel and 4 channel



TP-01FMM / TP-04FMD

FM Modulator / Demodulator

Device to receive images from 8 cameras and to distribute 3 channel type images



TP-138VDA

Video Distribution Amplifier

Device to receive RS-485 data and distribute the data up to 8 channels



TP-800SD

Data Signal Distributor

Easily check and set the controller's state through Ethernet(TCP/IP) port, and available to Control P/T, LENS, AUX etc)



TP-EC49A

Multi Function Controller

Device to distribute and control power into 8 channels



TP-800PC

Power Controller

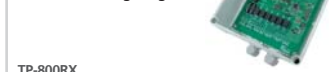
All-weather type for dust, Poisonous gas and High temperature
As a Junction box, Protection level is IP67



VDJB-400

Weather Proof Junction BOX

Device that receives data signal from the central device and controls the camera rotator, zoom lens and lighting



TP-800RX

Control Receiver

Absorb the surge from the falling thunderbolt and protect the equipment



TP-SP80K-220S

Surge Protector

Camera Housing



VDI-140

All-weather housing for vibration, dust, harmful gas, and high temperature

Usage environment
- Temperature : -15℃ ~ 60℃
Input voltage : 110/220V AC, 60Hz
HEATER : 50W(Below -5℃ ON, 15℃ OFF)

Material : Stainless Steel
Weight : 13Kg
In-flow rate : 50 l / min or above pressure : 1-3kg
Size : 435(L) * Ø140 * Variable Sun-shield

Option : Air Purging



TP-900HFS

All-weather housing for dust and harmful gas

Input voltage : 110/220V AC, 60Hz
Mount Hole : M8 x 20 Bolt
Ambient temperature : -15℃ ~ 49℃
Size : 580(L) X 154(W) X 197(H)mm

Weight : about 8Kg
Power and Control
- Fan : 15VA (25℃ ON, 20℃ OFF)
- Heater : 50W (Below -5℃ ON, 15℃ OFF)
In-flow rate : 50 l / min or Above
Pressure : 1~3Kg/cm²

Air Purging



TP-900HFS

Outdoor, outstanding durability

Input voltage : 110/220V AC, 60Hz
Mount Hole : M8 x 20 Bolt
Ambient temperature : -15℃ ~ 49℃
Size : 580(L) X 154(W) X 197(H)mm

Weight : about 8Kg
Power usage and Control
- Fan : 15VA (25℃ ON, 20℃ OFF)
- Heater : 50W (Below -5℃ ON, 15℃ OFF)



TP-970WC

Perfect protection from high heat to radiant heat

COOLING WATER
- Temperature : 35℃ or / Below
- In-flow rate : 5 l / min or above
- Pressure : 1.5Kg/cm²

Material : Stainless Steel
Workable Temperature : 70℃ below
Size : 457(L) X 150(W) X 170(H)mm
Weight : Below 23Kg

Air Purging & Water Cooling

Pan / Tilt Head

600 Series Pan / Tilt Head



TP-600PT For I-TV, CCTV

- Power : AC110/220V, 50/60hz
- Rotation angle : 355°(left/right), Up : +20° ~ Down : -70°
- Rotation speed : 6.9° (Left/right), up/down : 3.3°/sec
- Power consumption : left/right 30W, up/down: 30W
- Loaded weight : over 30kg
- IP66

TP-600PS For enforcement system

- Power : AC110/220V, 50/60hz
- Preset**
- Rotation angle : Right/left 355°, Up : +20° ~ Down : -70°
- Rotation speed : Right/left 6.9°, up/down : 3.3°/sec
- Power consumption : Right/left 30W, up/down: 30W
- Loaded weight : over 30kg
- IP66

TP-600PSV For enforcement system

- Power : AC 220V, 50/60hz
- Preset**
- Rotation angle : Right/left 355°, Up : +20° ~ Down : -70°
- Rotation speed : Right/left 3°, up/down : 3.3°/sec
- Power consumption : Right/left 25W, up/down 25W(no load)
- Loaded weight : over 30kg
- Material : Stainless steel (SUS304)**
- IP66

700 ENDLESS Series Pan / Tilt Head



Maximum Pan/Tilt speed 120°
MEGA PIXEL(Full HD) camera
HD CABLE SLIP RING for 360° (ENDLESS)
Accurate PAN/TILT speed and positional control function by BLDC MOTOR
load 55kg

TP-700PTE-BS (Endless) For traffic monitoring, CCTV

- Power : DC 24V
- Preset**
- CABLE : STANDARD CABLE
- Power Consumption : 180W, PAN : 50W, TILT : 50W
- PAN speed (left/right) : 0.2°~ 120°/SEC
- TILT speed (up/down) : 0.1°~ 25°/SEC
- PAN angle (left/right) : **ENDLESS(360°)**
- TILT angle (up/down) : +30°~ -90°

TP-700PTE-BH (Endless) For traffic monitoring, CCTV

- Rated power : DC 24V
- Preset**
- CABLE : **HD CABLE**
- Lloaded weight : 55KG
- Weight : About 16KG
- Size : 350(L) x 321(H) x 208(W)
- Usual temperature : -35℃ ~ +60℃, **Heater is installed**
- IP66

700 Series Pan / Tilt Head



Maximum speed 45° left/right rotation(per min) load 40kg

TP-700PT-B For traffic monitoring, CCTV, Tunnel CCTV

- Rated power : : DC24V
- Preset**
- CABLE : STANDARD CABLE
- Power Consumption : 180W, PAN : 50W, TILT : 50W
- PAN speed (left/right) : 0.2°~ 120°/SEC
- TILT speed (up/down) : 0.1°~ 25°/SEC
- PAN angle (left/right) : 1°~ 355°
- TILT angle (up/down) : +30°~ -90°
- Loaded weight : max 55KG
- Weight : About 16KG
- Size : 350(L) x 321(H) x 208(W)
- Operation temperature : -35℃ ~ +60℃, **Heater Equipped**
- IP66

TP-700PT-D For traffic monitoring, CCTV

- Power : DC24V
- Preset**
- CABLE : STANDARD CABLE
- Power Consumption : 100W, PAN : 15W, TILT : 15W
- PAN speed (left/right) : 2°~ 45°/SEC
- TILT speed (up/down) : 2°~ 20°/SEC
- PAN angle (left/right) : 1°~ 355°
- TILT angle (up/down) : +30°~ -90°
- Loaded weight : max 40KG
- Weight : About 15KG
- Size : 350(L) x 321(H) x 208(W)
- Operation temperature : -25℃ ~ +60℃
- High-speed rotation with DC motor
- Perfect positional Control based on PRESET function Application area
- IP66

CCTV IR Light Panel

CCTV IR Light Panel



Main specification

- Model : TP-150IRL
- Size : 206mm X 230mm X 110mm
- Material : Aluminum
- LED Type : 850nm/ 1.5W
- Power Supply : DC9V
- Rated Capacity : 50W
- Weight : 2.5Kg
- IP66



Security Network Cameras

Full HD / 1,920 x 1,080 H.264 Weather Proof Camera featuring Optical 30x zoom and Super Dynamic

Super Dynamic Weather Resistant
Full HD PTZ Dome Network Camera

WV-SW598A

(24V AC or PoE Plus : NTSC, PAL)

- 1080p HD images up to 30 fps
- 2.4 Megapixel high sensitivity MOS Sensor
- Super high resolution at Full HD / 1,920 x 1,080 created by 2.4 Megapixel high sensitivity MOS Sensor
- Multiple H.264 (High profile) streams and JPEG streams ensure simultaneous real time monitoring and high resolution recording by new "UniPhier"; Panasonic's proprietary System LSI platform.
- Full frame (Up to 30 fps) transmission at 1,920 x 1080 image size
- 30x optical zoom
- 90x extra optical zoom at 640x360 resolution with 12x digital zoom enabling 1080x zoom.
- Super Dynamic and ABS (Adaptive Black Stretch) technologies deliver 128x wider dynamic range compared to conventional cameras.
- Face Super Dynamic Range technology ensures clear face image.
- High sensitivity with Day & Night (IR) function:
- 0.5 lx (Color), 0.06 lx (B/W) at F1.6
- VIQS (Variable Image Quality on Specified area) technology allows the designated 2 areas to retain higher image quality while the excluded area will have a decreased image quality, which enables to use lower image file size and bit rate.
- VIQS can be set on preset position (1 to 8) and except preset.
- Digital Noise Reduction: 3D-DNR ensures noise reduction in various conditions.
- Progressive scan ensures clear images with less motion blur and no tearing even when the subject is moving.
- Electronic sensitivity enhancement: Auto (Up to 16x) / OFF
- Selectable light control modes:
- Outdoor scene / Indoor scene (50 Hz) / Indoor scene (60 Hz) / Fix shutter
- Indoor scene (50 Hz / 60 Hz): Flicker caused by fluorescent lightning will be automatically compensated.

- 360 degrees endless Panning
- Advanced auto tracking: The camera automatically pans and tilts to follow a moving subject and keep it in the center of the image.
- PTZ control can be taken very smoothly on the user friendly GUI with 16 speeds pan/tilt and new "Drag and Zoom" operation enabling finer control. 256 speeds available for system with WV-CU950 system controller.
- Up to 256 preset positions
- 360 map shot: 8 thumbnail images at 45 deg. intervals make it simple to direct the camera easily by clicking on a thumbnail.
- Industrial grade Pan / Tilt / Zoom mechanism for high reliability
- VMD (Video Motion Detection) with 4 programmable detection areas, 15 steps sensitivity level and 10 steps detection size
- Privacy Zone can mask up to 32 private areas, such as house windows and entrances/exits.
- Camera title display: Up to 20 alphanumeric characters on the browser
- Alarm sources including 3 terminal input, VMD and Panasonic alarm command can trigger actions such as SDXC/SDHC/SD memory recording, FTP image transfer, E-mail notification, Indication on browser, Alarm terminal output, and Panasonic alarm protocol output.
- Full duplex bi-directional audio allows interactive communication between camera site and monitoring site.
- JPEG Image compression ratio can be changed by alarm so that higher quality image can be provided.
- Prioritized stream control: One of the video streams can be prioritized when multiple recorders or client PCs are accessing the camera so that the recorder or the client PC can maintain the frame rate.
- SDXC/SDHC/SD Memory card slot for manual recording (H.264 / JPEG), alarm recording (H.264 / JPEG) and backup upon network failure (JPEG)
- H.264 max. bit rate / client and Total bit rate control allows flexible network traffic management. Frame rate priority mode controls bit rate and compression ratio to provide the specified frame rate.
- Internet mode: H.264 images can be transmitted over HTTP protocol.
- Multi-language: English / Italian / French / German / Spanish / Russian / Chinese / Japanese
- IPv4/IPv6 protocol supported
- Supports SSL, DDNS (viewnetcam, RFC2136)
- Still images (JPEG) can be viewed on mobile phones via Internet.
- Onvif compliant model
- IP66 rated water and dust resistant. Compatible with IEC60529 measurement standard.
- Dehumidification device for use in various weather conditions
- Rain wash coat dome cover

- Ambient Operating Temperature: -50 °C ~ +55 °C (-58 °F ~ 131 °F)
- Fog and Sandstorm compensation
- AEM (Auto Eyelid Mechanism) offers images that are more natural and easy to watch reducing doubled images when direction of the lens moved above the horizontal.



Fixed Dome Network Cameras

Super Dynamic Fixed Dome Network camera

WV-SFV631L

(PoE : NTSC, PAL)



- Outdoor vandal resistant
- Clear images in a wide range of lighting conditions
 - _ Enhanced Super Dynamic
 - _ High sensitivity MOS with Multi-process Noise Reduction (MNR)
 - _ Wide range built-in Infrared (IR) LED
 - _ Super Chroma Compensation (SCC)
 - _ Fog and sandstorm compensation
 - _ High Light Compensation (HLC)
 - _ Smart Depth of Field (DoF)
- Full HD / HD at up to 60fps
- IP-Network friendly
- Intelligent VMD and Add-on camera application platform
 - _ Intruder detection
 - _ Loitering detection
 - _ Direction detection
 - _ Scene change detection
 - _ Object detection
 - _ Cross line detection
- Tough design and flexible installation
- Quick field installation

Panasonic
ideas for life



Security Network Cameras
Dome Network Cameras
Fixed Dome Network Cameras
HD Network Cameras
Fixed Network Cameras

Fixed Dome

Super Dynamic Full HD
Dome Network Camera

WV-SF138

(24V AC or PoE Plus : NTSC, PAL)



- Wide View Angle (Horizontal 100deg)
- Compact Size
- Sizes of the models are Ø104mm(W and D) and 47mm(H)
- Built-in microphone
- Sound detection
- SDXC memory card(H.264/AUDIO recording)
- 3x Extra Zoom (360p)
- 1080 p / 30 fps Mega Super Dynamic
- H.264 x 2 & JPEG Triple Encode
- Super Dynamic Function



360° Fixed Dome Network Cameras

360-degree
Vandal Resistant Network Camera

WV-SW458



- Wide range of image modes
- Built-in Image and Distortion Correction
- Installation Method
- High Resolution(1080p Full HD images to 30fps)
- Super Dynamic Function & Face Detection
- 2-area VIQS(Variable Image Quality on Specified Area)
- Smooth PTZ operation without mechanical action
- Smartphone Monitoring
- SDXC Memory Card Compatible
- Motion Detection + Panasonic alarm protocol notification
- Privacy Zone
- Small and thin compact body
- Vandal Resistant Mechanism
- IP66 Compatible
- Dehumidifier
- In-vehicle Compatible

360-degree Network Camera

WV-SFV481



- 9 Megapixel 360-degree Network Camera
- All-new design for 360° video surveillance
- 360° / 180° wide area coverage with 9MP Resolution
- De-warping in camera
- Intelligent VMD and Business Intelligence
- Seamless integration with i-PRO system

HD Network Cameras

Super Dynamic Fixed Network camera

WV-SPN631

(1080p)

WV-SPN611

(720p)



- Unique versatile design (WV-SPN631, WV-SPN611)
- Clear images in a wide range of lighting conditions
 - _ Enhanced Super Dynamic
 - _ High sensitivity MOS with Multi process Noise Reduction (MNR)
 - _ Super Chroma Compensation (SCC)
 - _ Fog and sandstorm compensation
 - _ High Light Compensation (HLC)
 - _ Built-in/Optional Infrared (IR) LED
- Full HD / HD at up to 60fps
- IP-Network friendliness
- Optional intelligent VMD and Add-on camera application platform



The Open Platform Company

Video Management Software

Open Platform IP video software management

XProtect Advanced 2014

XProtect Corporate is powerful, IP video management software designed for large-scale, multi-site installations. It supports an unlimited number of cameras, users and sites. XProtect Corporate provides the ultimate peace of mind for high-risk security installations. Edge Storage combined with failover Recording Servers and a redundant Management Server ensure video recordings are never interrupted and access to the system is always maintained. Centralized management is even easier with Milestone Federated Architecture™, while integrated map applications and built-in support for XProtect® Smart Wall ensure exceptional surveillance overview and control.

XProtect Enterprise 2014

XProtect Enterprise is comprehensive IP video management software designed for medium and large-scale installations, primarily multi-site, multi-server deployments. Quick and easy to set up and manage, XProtect Enterprise's powerful features such as system configuration wizards and auto-detection of hardware significantly reduce the time and costs of deploying large security installations. The consolidated single-management interface provides an efficient way to view and control an unlimited number of cameras,* giving supreme situational awareness for quick response and accurate investigation. XProtect Enterprise also supports endless integration possibilities using the Milestone Integration Platform Software Development Kit (MIP SDK), allowing you to future proof your investment and add customized functionality to your security solution.

XProtect Professional 2014

XProtect Professional is comprehensive open platform IP video management software for mid-sized, single-site installations. With multiple configurable servers, it supports up to 64 cameras per server and an unlimited number of users. XProtect Professional is ideal for capturing video and for installations requiring supreme playback functionality, by providing an efficient way to manage video and swiftly export evidence. Search tools such as Smart Search and the Sequence Explorer allow you to quickly find incidents from one or more cameras. A complete solution for campuses that have multiple buildings at a single-site, XProtect Professional features Milestone Integration Platform (MIP) support, enabling integration with business systems and video analytics.

XProtect Express 2014

XProtect Express is open platform IP video management software (VMS) designed for small businesses especially retail. It is a single-server solution that can manage up to 48 surveillance cameras and supports five concurrent users. XProtect Express is affordable VMS for businesses that want to video enable their surveillance installation. It supports video analytics and third-party integrations through the Milestone Integration Platform (MIP) so you can add functionality and customize your system. Easy to set up and manage, XProtect Express also supports add-on products specifically designed to help you optimize your store operations. XProtect® Retail and XProtect® Transact link transaction data with corresponding video from relevant cameras, helping to verify transactions and reduce fraud. With flexible licensing options and an open platform environment, XProtect Express prepares you for the future so you can seamlessly upgrade and expand your system as security and business needs change.

XProtect Essential 2014

XProtect Essential is open platform IP video management software (VMS) designed for small, single-server businesses. It can manage up to 26 surveillance cameras and supports five concurrent users. XProtect Essential is an entry-level product that is ideal for retail and other small businesses that require basic, yet effective VMS functionality. With a user-friendly interface, it is easy to capture, view and export video evidence. Search tools such as the Sequence Explorer allow you to quickly locate incidents from one or more cameras, simplifying the evidence collection process. With a flexible licensing model, XProtect Essential makes it easy to expand your system by adding additional cameras or upgrade to our premium products.

Key features / 2016	XProtect Go	XProtect Essential	XProtect Express	XProtect Professional	XProtect Enterprise	XProtect Expert	XProtect Advanced
Type of deployment	Single-server	Single-server	Single-server	Multi-server	Multi-site	Centrally managed and multi-server	Centrally managed and distributed sites
Number of connected cameras per system	8	26	48	Unlimited	Unlimited	Unlimited	Unlimited
Number of supported cameras per recording server	8	26	48	Unlimited	Unlimited	Unlimited	Unlimited
Number of supported recording servers	1	1	1	Unlimited	Unlimited	Unlimited	Unlimited
Maximum numbers of users	1	5	5	Unlimited	Unlimited	Unlimited	Unlimited
Multiple video export formats	No(2)	Yes	Yes	Yes	Yes	Yes	Yes
Supports XProtect Smart Client, XProtect Web Client and Milestone Mobile	Yes	Yes	Yes	Yes	Yes	Yes	Yes
Alarm Manager	-	Yes(3)	Yes(3)	Yes	Yes	Yes	Yes
Map function	-	Yes(4)	Yes(4)	Yes	Yes	Yes	Yes
Archiving to network storage	-	-	Yes	Yes	Yes	Yes	Yes
Third-party application integration and support for video analytics (5)	-	-	Yes	Yes	Yes	Yes	Yes
Video out via Milestone ONVIF Bridge	-	-	Yes	Yes	Yes	Yes	Yes
Microsoft Active Directory support	-	-	-	Yes	Yes	Yes	Yes
Metadata support	-	-	-	-	-	Yes	Yes
Centralized management	-	-	-	-	-	Yes	Yes
Flexible event rule engine	-	-	-	-	-	Yes	Yes
Edge Storage	-	-	-	-	-	Yes	Yes
Failover Recording Servers	-	-	-	-	-	-	Yes
Evidence Lock	-	-	-	-	-	-	Yes
Supports XProtect Smart Wall	-	-	-	-	-	Option	Included
Milestone Interconnect™	-	Remote site	Remote site	Remote site	Remote site	Remote site	Central / Remote site
Milestone Federated Architecture™	-	-	-	-	-	Remote site	Central / Remote site
Customer Dashboard(5)	-	Supported	Supported	Supported	Supported	Supported	Supported
Connected Services(5)	-	Supported	Supported	Supported	Supported	Supported	Supported

Notes:

- (1) For most installations larger than 250 cameras, Milestone recommends using XProtect Expert or XProtect Corporate
 (2) Media Player (AVI) format only
 (3) Not full alarm management functionality
 (4) Supports a single-layer, interactive map, without alarm integration
 (5) Using Milestone Integration Platform (MIP)
 (6) Requires active Milestone Care Plus

The Soul for a Dream



TOPES Co., Ltd.

31, Nokchon-ro 106beon-gil, Hwado-eup, Namyangju-si, Gyeonggi-do, 12187, Rep. of KOREA

Tel. +82-31-593-0294 Fax +82-31-511-8286

www.topes.com